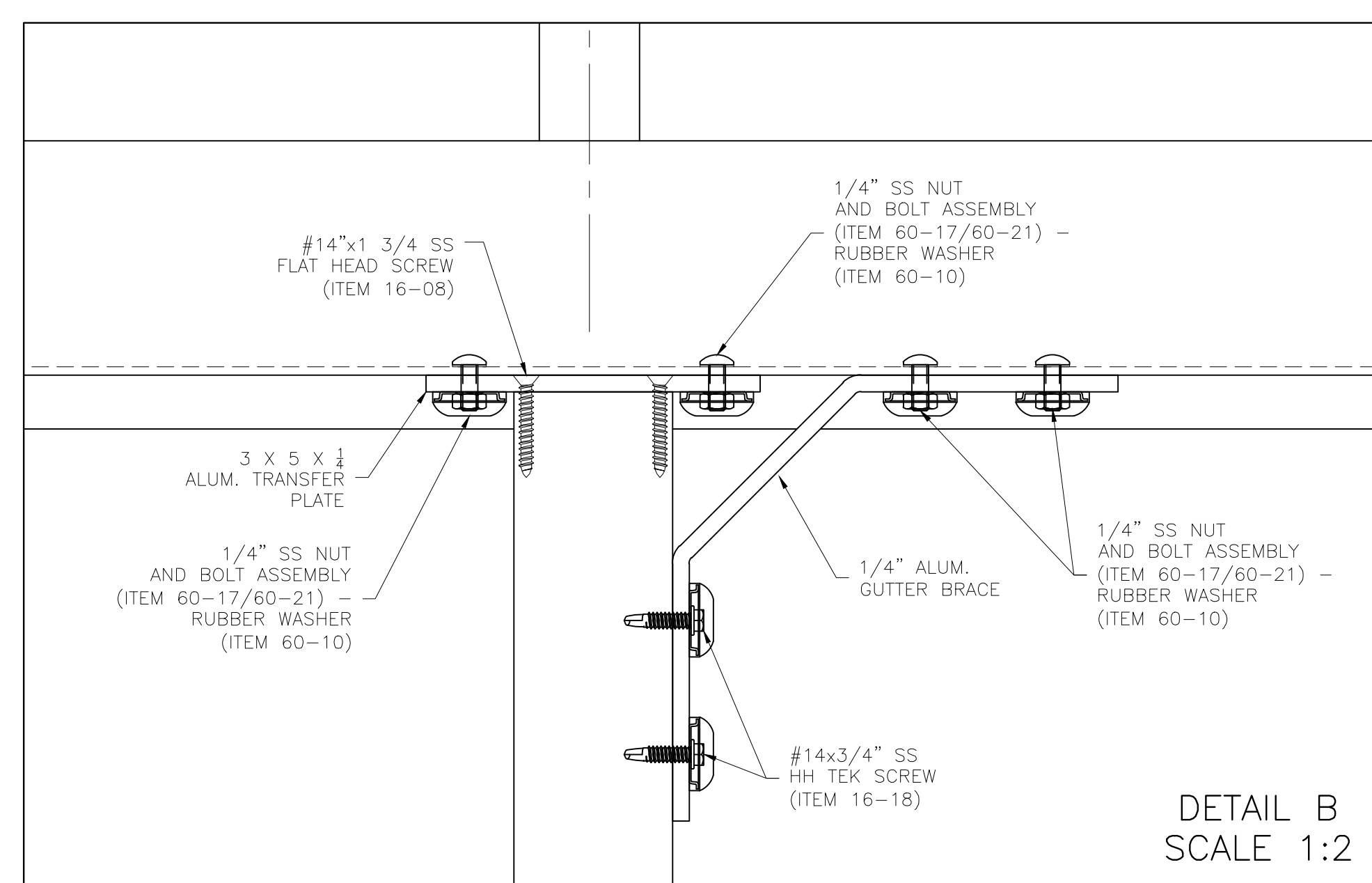
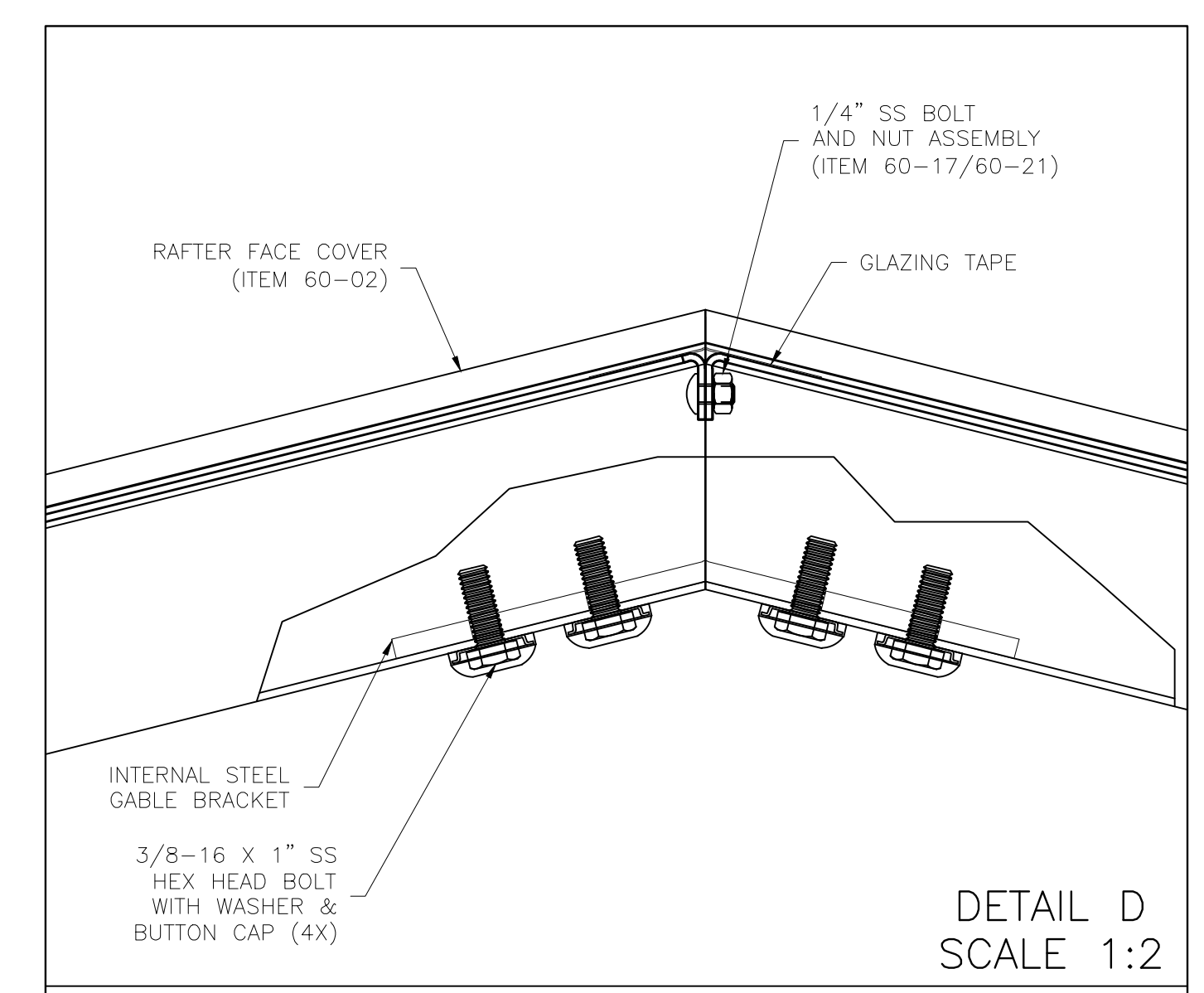


NOTE:
SEE SHEET 2 FOR FABRICATION & ASSEMBLIES



HARDWARE PARTS LIST

PART #	NAME	QTY
16-18	#14x3/4" SS HH TEK SCREW	56
60-17	BOLT 1/4-20x5/8 SS 316	70
	BOLT 1/4-20 x 2 SS 316	16
60-21	HEX NUT 1/4-20	70
60-10	RUBBER WASHER	24
16-07	#10x3/4" SS FLAT HEAD SCREW	8
16-14	14"x3/4 SS TRUSS HEAD SCREW	128
16-08	#14"x1 3/4 SS FLAT HEAD SCREW	32
16-32	BUTTON CAP (COLOR MATCHED)	156
16-25	1/4" ID BUTTON CAP WASHER	140
16-26	3/8" ID BUTTON CAP WASHER	16
16-01	3/8"x3 3/4" SS LAG SCREW	16
02-01	3/8"x3 3/4" SS WEDGE ANCHOR	16
	GLAZING TAPE	14FT

SMALL PARTS LIST

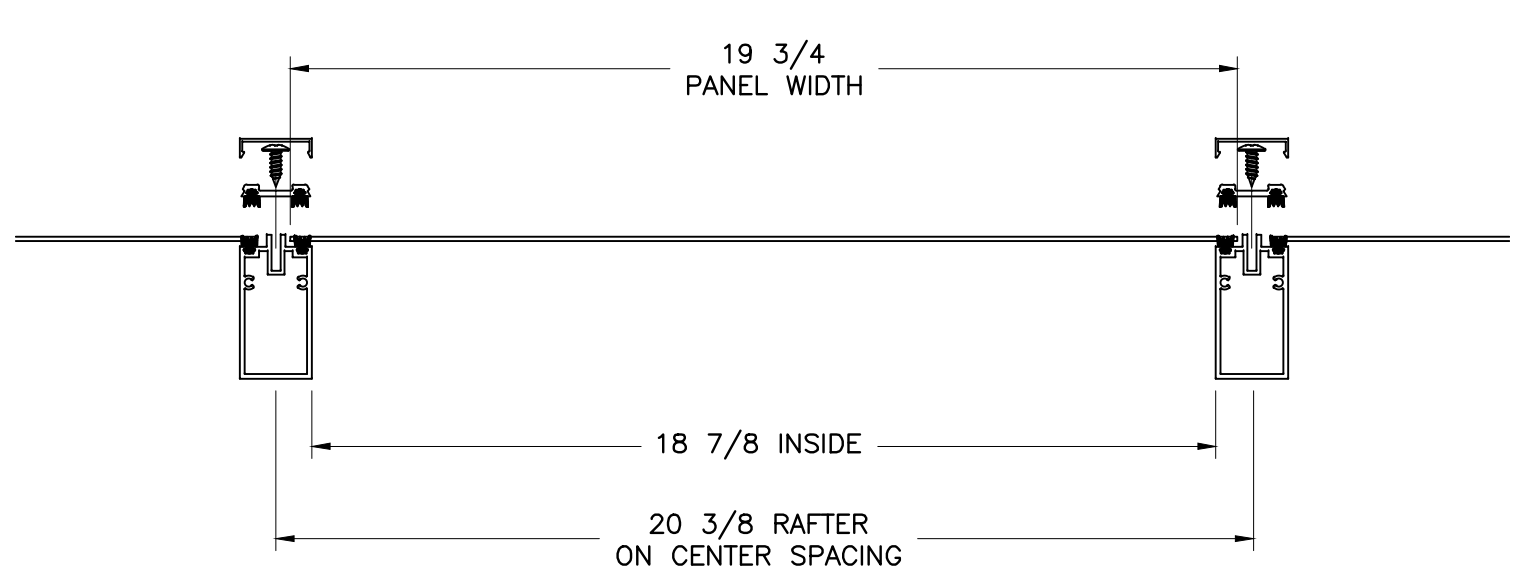
PART #	NAME	QTY
38-13	3x5 NEOPRENE GASKET 1/16 THICK	4
38-06	5x5 NEOPRENE GASKET 1/16 THICK	4
60-12	GUTTER END PLATE LEFT	2
60-13	GUTTER END PLATE RIGHT	2
60-33	RAFTER BRACKET	16
	GABLE BRACKET	8
04-01	3x5x1/4 TRANSFER PLATE	4
04-02	5x5 BASE PLATE	4

EXTRUSION PARTS LIST

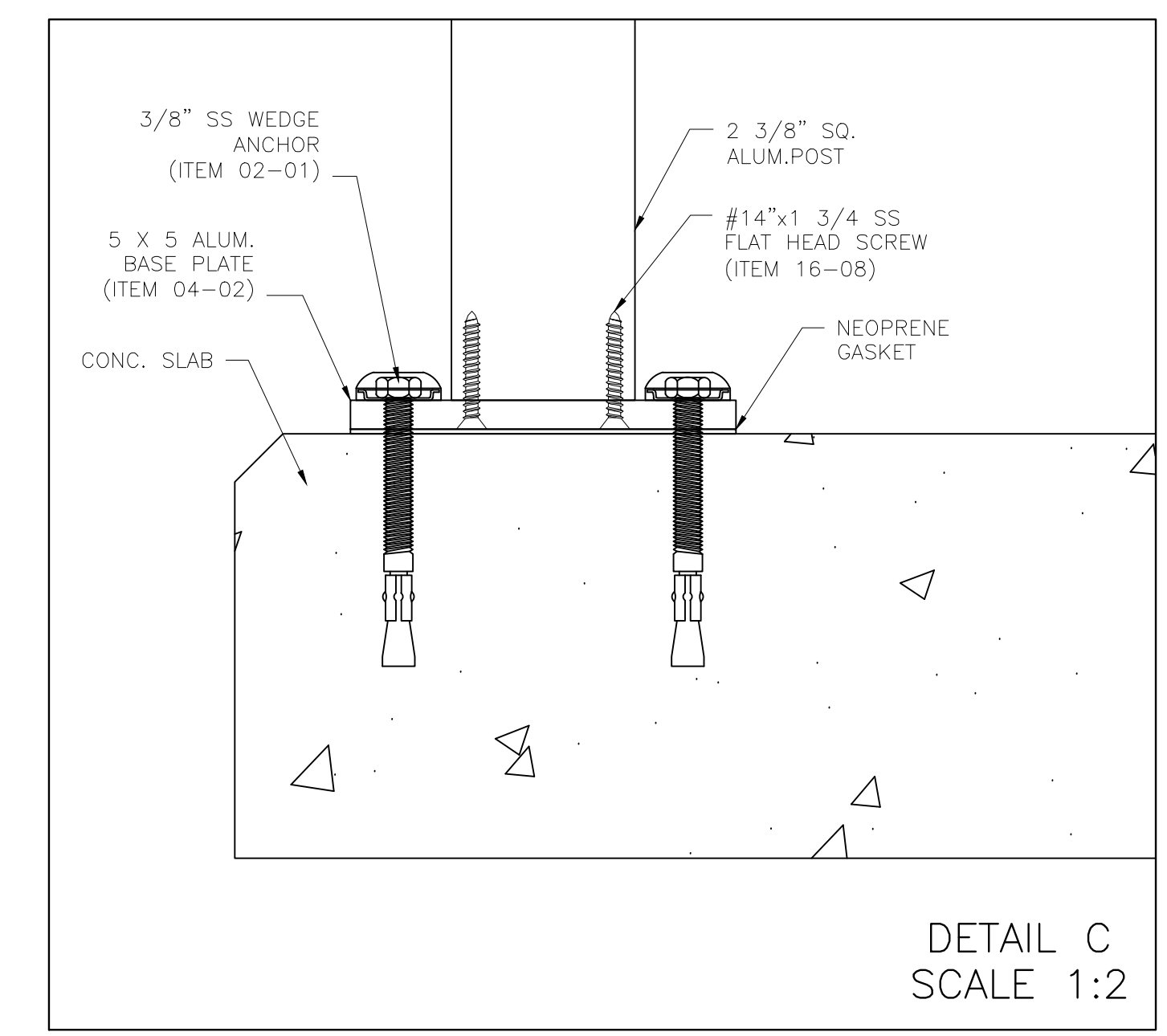
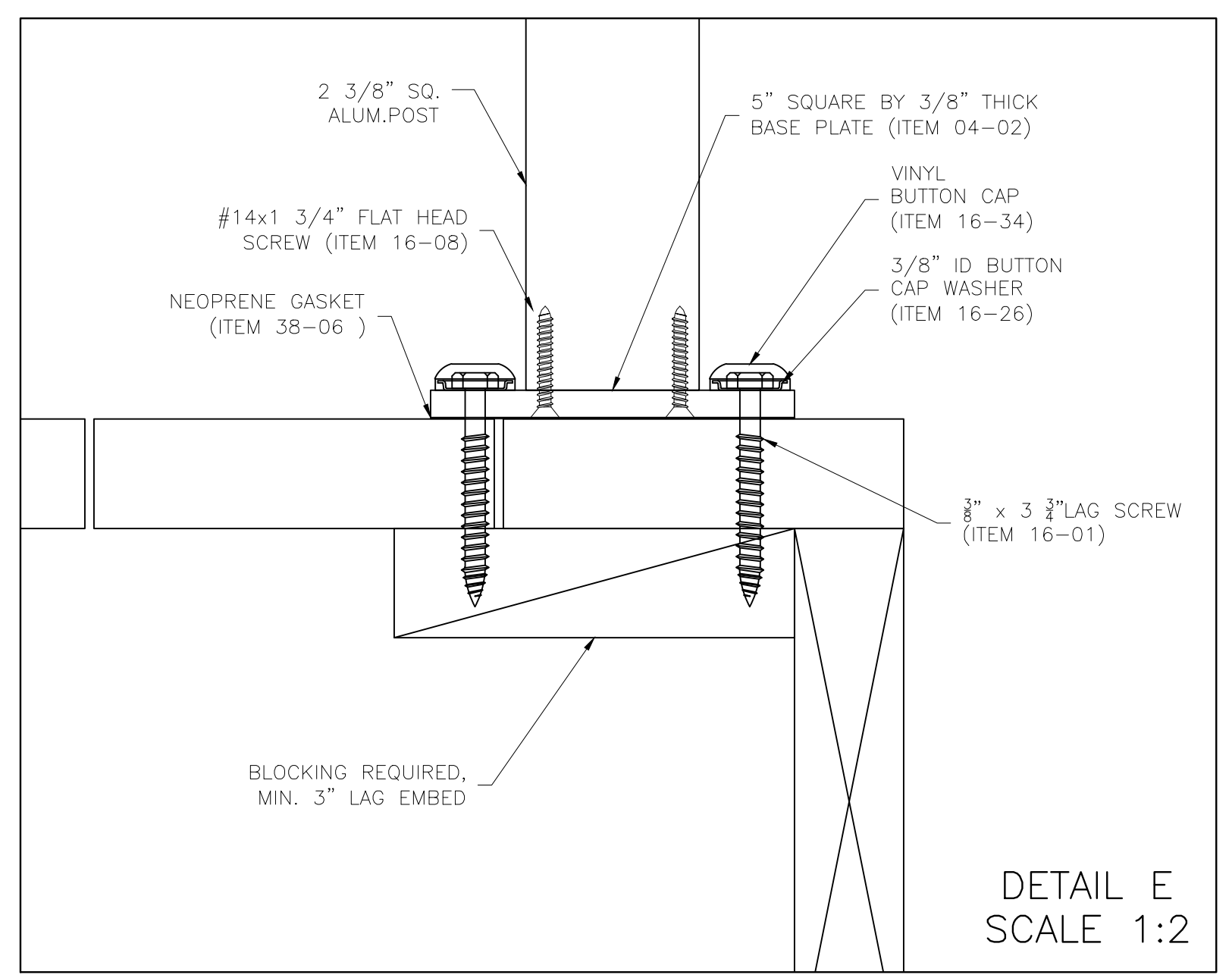
PART #	NAME	QTY	LENGTH
60-08	GUTTER	2	SEE FAB DETAIL
60-01	RAFTER	16	SEE FAB DETAIL
60-03	PRESSURE PLATE*	16	70 3/4"
60-02	FACE COVER*	16	SEE FAB DETAIL
32-02	POST	4	84"
60-16	EPDM GASKET*	1	378"

*SMALL EXTRUSIONS ARE NOT TO SCALE FOR CLARITY

VERIFY MOUNTING SURFACE TO DETERMINE WHICH ANCHOR IS REQUIRED



TYPICAL RAFTER / PANEL SPAN

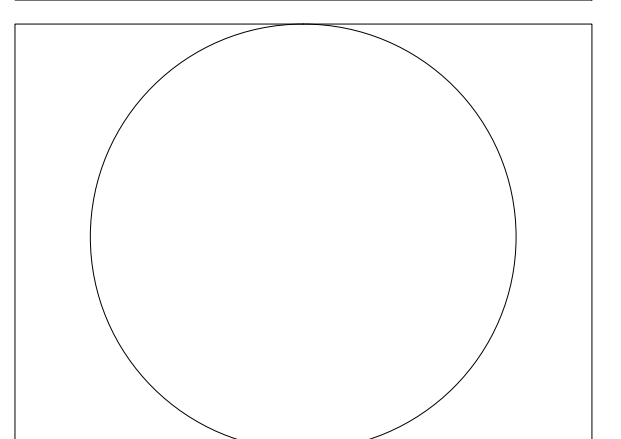


HANSEN
ALUMINUM RAILING
5500 SE ALEXANDER ST.
HILLSBORO, OR 97123
PHONE 503.356.0959
FAX 503.356.8478
WWW.ALUMINUMRAILING.COM

SKY VUE™
Patio Covers
PROJECT COLOR TO BE DETERMINED

SUBMITTAL

PROPRIETARY AND CONFIDENTIAL
THE INFORMATION CONTAINED IN THIS DRAWING IS THE SOLE PROPERTY OF SKY VUE PATIO COVERS. ANY REPRODUCTION IN PART OR AS A WHOLE WITHOUT WRITTEN PERMISSION OF SKY VUE PATIO COVERS IS PROHIBITED.



CLIENT INFORMATION
SKY VUE PATIO COVERS
PROJECT NAME
VISION™ 12 X 12 GABLE CANOPY

PROJECT NUMBER 12-23-10
DATE ISSUED
SHEET 1 of 2 REVISION A